



ASA Environmental Products, Inc.
 22 Bayview Avenue / P.O. Box 789
 Stonington, CT 06378-0789
 (T) 1-860-535-3931
 (F) 1-860-535-3970
 info@ASA-environmental.com
 www.ASA-environmental.com

UTC/Sikorsky Aircraft Corp. & GD/Electric Boat Corp.
 "MBE Supplier of the Year"

Industrial Diesel Polishing Systems for Power Sensitive Facilities



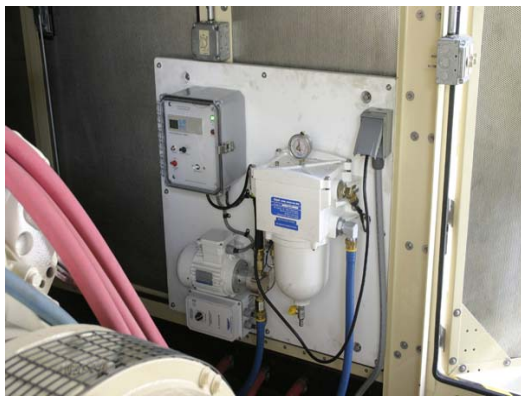
Miami Dolphins Training Camp, Davie, FL



Mohegan Sun Casino, Uncasville, CT

"No matter how well maintained and tested your stand-by generators are, if you don't maintain the diesel fuel in your storage tanks, your generators WILL FAIL."

AT&T Official in Texas discussing Lessons Learned from Hurricanes Rita & Katrina



Miami Dolphins
 DPS-600 Wall Mounted
 (NEMA 3R Enclosure Optional)



Mohegan Sun Casino
 DPS-600 Portable

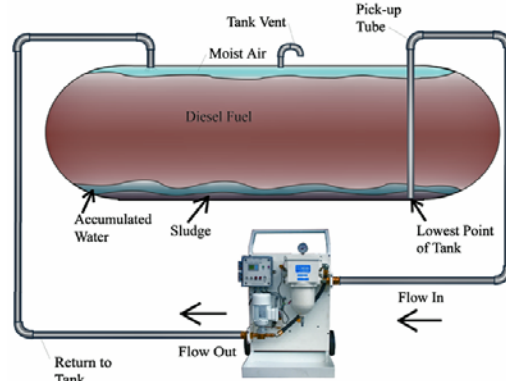


US Embassy United Arab Emirates
 After 1-Pass Thru DPS

**AN EASY TO USE SYSTEM
 FOR IN-HOUSE MAINTENANCE OF
 STORED DIESEL FUEL**

SYSTEMS AVAILABLE: 210 – 600 – 2000 Gallons/Hour

1-800-783-5272



ASA/DPS-INDUSTRIAL DIESEL POLISHING SYSTEMS

DIESEL FUEL SERVICE CART (DFSC)

3 in 1 Portable System

Polish Storage Tanks - Polish when Dispensing - Polish Engine Tanks



BEFORE & AFTER



ABOVE: Actual test samples from Trinidad & Tobago Coast Guard Coastal Patrol Vessel

City of Tacoma (WA) - John B., Environmental Services Dept.
comments after using the DFSC at a mix of Water Dept. Lift Station Generators

"I now have a deep understanding of that picture (above) that you sent me ... "

"I have had fantastic success with the Diesel Service Cart. After recently discovering one of our 1500 gallon tanks was in trouble & having never done this before, it took a few minutes to get the hang of things. It was capable of removing two inches of algae laden water and restored the fuel to pristine condition."

"After looking at several different units, I'm really glad to have chosen yours. The Starter Kit is a great idea, no fluff it's good stuff."

"We're already money ahead!"

ASA Environmental Products Inc. - info@ASA-environmental.com - 1-800-783-5272

Diesel Fuel Service Cart



A 3-in-1 Diesel Fuel Service Cart that efficiently removes water and bacterial growth from diesel fuel reducing the possibility of engine or fuel system damage.

The cart is equipped with a Separ Filter fuel/water separator that cleans diesel by circulating and filtering the fuel. This prevents maintenance problems and makes sure your systems are kept ready for emergency situations and daily operations.

- Lightweight and designed with truck skids for easy loading and operation
- The most compact cart easily fits through building doorways
- Can run unattended
- Has safety shutdown, alarms for filter and water and maintenance alerts
- Removes 99.9% water and 99% bacterial growth detrimental to pumps and injectors
- For tanks up to 10,000 gallons

Applications

- Fleet Maintenance
- Portable Cleaning
- Boatyards
- Fuel Polishing Services
- Backup Power Maintenance
- Field Maintenance
- Above/Below Ground Tanks
- Farm Equipment
- Equipment Belly Tanks
- Fuel Dispensing

3-in-1 Portable System

- 1** Polish the storage tank
Fuel stored more than 3 months begins to degrade
- 2** Polish when dispensing
Transfer clean fuel when delivering from unreliable sources
- 3** Polish the engine tank
Equipment is ready when unused for a period of time



ASA Environmental Products, Inc.
www.ASAenvironmental.com
info@ASAenvironmental.com
(T) 1-800-783-5272



Shown with optional flow meter.

Basic Features

- Hose - 15 ft suction and discharge
- Separ Filter SWK-2000/40MK
- 30 micron paper element
- Electronic control box with 0 to 5 hour timer
- LED indicators for element replacement and backflushing
- Drip pan - easy to remove for cleaning
- Vacuum gauge
- Safety shutdown and alarm for clogged filter and water
- Truck skids
- Hose hanger
- Strainer valve on suction side

Optional Features

- Manual nozzle
- Flow meter
- Variable length pickup/discharge tube
- 60 micron stainless steel element
- 10 micron paper element

Flow Rate	630 GPH / 2,400 LPH	
Voltage	120V / 60 Hz	
Amp. Draw	3.4A / 120V	
Pump Type	Vane	
Self-Priming	6.7 ft / 2m (wet gears)	
Dimensions	Width	21.5" / 546 mm
	Height	50.5" / 1,282 mm
	Depth	22.9" / 581 mm
Weight	105 lbs / 47.6 kg	

SWK-2000/40MK from Separ Filter

The Diesel Fuel Service Cart features the SWK-2000/40MK. The Separ patented filtration is achieved by 5 separate stages to remove water and particulate from diesel fuel. The end result is clean, reliable fuel delivered to the engine or storage tank.



- Small filter size keeps the cart lightweight in comparison to competitor brands with the same flow rate
- Separates most debris and large particles before they reach the element, thereby extending element life
- Backflush capability reduces frequency of element replacements
- Metal filter housing and bowl
- Water level contacts



ASA Environmental Products, Inc.
www.ASAenvironmental.com
info@ASAenvironmental.com
 (T) 1-800-783-5272

Replacement Elements for SWK-2000 Series

Compatible with diesel fuel and biodiesel. Fits single and duplex filter versions.

Model	Element			Lid Gasket
	Part Number	Description	Dimensions	
SWK-2000/5	00510	10 micron	3 x 3 1/8 x 1 3/16 in 76 x 79 x 30 mm	10367
	00530	30 micron		
	00560S	60 micron stainless		
SWK-2000/5/50	00510/50	10 micron	3 3/16 x 3 1/4 x 2 1/8 in 81 x 82 x 54 mm	10367
	00530/50	30 micron		
	00560/50S	60 micron stainless		
SWK-2000/10	01010	10 micron	3 1/2 x 3 5/8 x 2 1/8 in 89 x 92 x 54 mm	10362
	01030	30 micron		
	01060S	60 micron stainless		
SWK-2000/18	01810	10 micron	5 13/16 x 5 7/8 x 2 1/8 in 148 x 149 x 54 mm	30421
	01830	30 micron		
	01860S	60 micron stainless		
SWK-2000/40	04010	10 micron	7 11/64 x 7 11/64 x 2 in 182 x 182 x 51 mm	30440
	04030	30 micron		
	04060S	60 micron stainless		
SWK-2000/130	<i>Requires 4 elements per filter</i>			30387
	01810	10 micron	5 13/16 x 5 7/8 x 2 1/8 in 148 x 149 x 54 mm	
	01830	30 micron		
	01860S	60 micron stainless		

Elements listed above are not applicable to heated filters. Please contact us directly for pricing and availability.

