



ULTRATECH
INTERNATIONAL, INC.

Top Sellers 518
Product Catalog

Products for a cleaner, safer world.

Spill Containment • Stormwater Management • Facility Protection



Ultra-Twin IBC Hard Top®
Outdoor storage for two IBC tanks

PAGE
3

www.ASA-environmental.com
1-800-783-5272
info@ASA-environmental.com



Ultra-Spill Pallets®

Spill pallets are built for heavy loads and convenient handling

- + High load capacity – 6,000 lbs. for 4-Drum Model, 3,000 lbs. for 2-Drum Model.
- + Bright, safety yellow sidewalls are translucent, offering convenient visual leak detection.
- + 100% polyethylene construction – compatible with a broad range of chemicals, including acids and corrosives.
- + Meets SPCC and EPA Container Storage Regulation 40 CFR 264.175 Spill Containment Regulations.



1000



2504

U.S. Patent No. 5,615,608

Part#	Description	Dimensions in. (mm)	Uniformly Dist. Load lbs. (kg)	Contain. Cap. gal. (L)	Weight lbs. (kg)
1010	P2 Standard (2-Drum)	53 x 29 x 16½ (1,347 x 737 x 420)	3,000 (1,361)	66 (250)	63.0 (29.0)
1000	P4 Standard (4-Drum)	53 x 53 x 11¾ (1,347 x 1,347 x 299)	6,000 (2,722)	66 (250)	90.0 (41.0)
2504	P2 Economy (2-Drum)	53 x 29 x 16½ (1,347 x 737 x 420)	1,500 (681)	66 (250)	63.0 (29.0)
1112	P4 Economy (4-Drum)	53 x 53 x 11¾ (1,347 x 1,347 x 299)	3,000 (1,361)	66 (250)	85.0 (39.0)
0678	P4 Ramp - Non-slip, Polyethylene & Steel	68½ x 28½ x 12 (1,740 x 724 x 305)	700 (318)	-	74.0 (34.0)

Also available with drain

Ultra-Spill Pallet Nestable Models®

Low-profile, nestable spill pallet reduces shipping costs and storage space

- + Large, 66-gallon sump captures leaks and spills from steel or poly drums (4 drum capacity).
- + Nestable design allows multiple pallets to be shipped (or stored) in a minimal amount of space.
- + 100% polyethylene construction – compatible with a broad range of chemicals, including acids and corrosives.
- + Low-profile (10" height) makes drum handling safer and easier.
- + 2-way forkliftable – provides easy positioning and relocation.
- + Meets SPCC and EPA Container Storage Regulation 40 CFR 264.175 Spill Containment Regulations.



1230



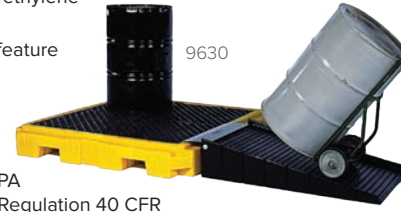
Part#	Description	Dimensions in. (mm)	Uniformly Dist. Load lbs. (kg)	Contain. Capacity gal. (L)	Weight lbs. (kg)
1230	Nestable (4-Drum)	51 x 51 x 10 (1,295 x 1,295 x 254)	6,000 (2,722)	66 (250)	80.0 (36.0)
0676	Ramp - Polyethylene & Steel	55½ x 28½ x 8¾ (1,410 x 724 x 222)	700 (318)	—	43.0 (19.5)

Also available with drain

Ultra-Spill Pallet Plus Models®

Combine high-strength and low-profile features while meeting EPA container storage regulations

- + Low profile positions drum funnels below eye level – significantly reduces the potential for hazardous fluids to splash into the eyes or face.
- + Nearly 50% lower than standard spill pallets. Drum handling is safer and less strenuous.
- + Forkliftable, all-polyethylene construction.
- + Removable grates feature a non-slip surface.
- + Available in 1, 2, 3, and 4-drum configurations.
- + Meets SPCC and EPA Container Storage Regulation 40 CFR 264.175 Spill Containment Regulations.



9630

0676 (Ramp)

U.S. Patent No. 5,615,608

Part#	Description	Dimensions in. (mm)	Uniformly Distributed Load lbs. (kg)	Contain. Capacity gal. (L)	Weight lbs. (kg)
9606	P1 Plus (1-Drum)	40 x 40 x 12 (1,016 x 1,016 x 305)	800 (363)	62 (235)	51.0 (23.0)
9610	P2 Plus (2-Drum)	65½ x 40 x 8¾ (1,664 x 1,016 x 222)	4,500 (2,041)	66 (250)	88.0 (40.0)
9626	P3 Plus (3-Drum)	83 x 34½ x 8¾ (2,108 x 876 x 222)	4,500 (2,041)	66 (250)	90.0 (41.0)
9630	P4 Plus (4-Drum)	62 x 62 x 8¾ (1,575 x 1,575 x 222)	9,000 (4,082)	75 (284)	140.0 (63.5)
0678	P1 Ramp	68½ x 28½ x 12 (1,740 x 724 x 305)	700 (318)	-	74.0 (34.0)
0676	P2, P3 & P4 Ramp	55½ x 28½ x 8¾ (1,410 x 724 x 222)	700 (318)	-	43.0 (19.5)

Also available with drain

Ultra-Hard Top Plus Models®

Store hazardous drums safely outdoors with pumps and funnels in place

- + Tall 23 3/4" head space easily accommodates rotary drum pumps and large conical funnels.
- + Low profile (8 3/4") containment pallet positions drum-top funnels at a safe, convenient level to pour hazardous wastes.
- + 100% polyethylene construction will not rust or corrode.
- + Meets SPCC and EPA Container Storage Regulation 40 CFR 264.175 Spill Containment Regulations.
- + Helps meet Stormwater Management Regulations — NPDES, 40 CFR 122.26 (1999).



9612

U.S. Patent No. 5,615,608

Part#	Description	Dimensions in. (mm)	Uniformly Dist. Load lbs. (kg)	Contain. Capacity gal. (L)	Weight lbs. (kg)
9640	P1 Plus (1-Drum)	36 x 36 66 (915 x 915 x 1,677)	800 (363)	70 (265)	75.0 (34.0)
9612	P2 Plus (2-Drum)	67¼ x 41¼ x 74 (1,708 x 1,047 x 1,677)	4,500 (2,041)	66 (250)	260.0 (118.0)
9636	P4 Plus (4-Drum)	64½ x 62 x 79 (1,638 x 1,575 x 2,007)	9,000 (4,082)	75 (284)	440.0 (200.0)
0676	Ramp - Polyethylene & Steel	55½ x 28½ x 8¾ (1,410 x 724 x 222)	700 (318)	—	43.0 (19.5)

Also available with drain & additional configurations available

Ultra-Spill Decks®

Low profile, modular spill decks allow you to design and create a containment system that meets your specific needs

- + Ultra-Spill Decks are available in 1, 2, and 4-drum modules. Modules are easily connected together with bulkhead fittings to allow a virtually unlimited number of customized configurations.
- + Applications include hazardous waste collection, storage of virgin chemicals, drum dispensing, and battery storage.
- + Optional Loading Ramps provide added drum handling safety and convenience.
- + Meets SPCC and EPA Container Storage Regulation 40 CFR 264.175 Spill Containment Regulations.



Shown above — 12-Drum Spill Deck System using the following components: (3) P4 Spill Decks — Part# 1072, (4) Bulkhead Fittings — Part# 1073, (4) T-Strips — Part# 1131 and (1) Ramp — Part# 1089. (Rack, drums and buckets are application props and are not included.)

Part#	Description	Dimensions in. (mm)	Uniformly Dist. Load lbs. (kg)	Contain. Capacity gal. (L)	Weight lbs. (kg)
1321	Spill Deck P1 Module	25 7/8 x 25 7/8 x 5 3/4 (657 x 657 x 146)	1,500 (681)	11 (42)	23.0 (10.0)
1086	Spill Deck P2 Module	52 x 25 7/8 x 5 3/4 (1,321 x 657 x 146)	3,000 (1,361)	22 (83)	40.0 (18.0)
1072	Spill Deck P4 Module	52 x 52 x 5 3/4 (1,321 x 1,321 x 146)	6,000 (2,722)	44 (167)	70.0 (32.0)
1089	Spill Deck Ramp	24 x 32 x 5 3/4 (610 x 813 x 146)	600 (272)	-	17.0 (8.0)

Ultra-IBC Spill Pallet Plus®

Economical and portable containment for IBCs

- + Low profile, 28" overall height— allows safe and convenient IBC tank handling and dispensing.
- + All polyethylene construction — offers excellent chemical resistance and will not rust or corrode.
- + Low-cost design with value-added features and benefits.
- + Available with optional Bucket Shelf (Part# 1160) — catches leaks or spills during dispensing.
- + Meets SPCC and EPA Container Storage Regulation 40 CFR 264.175 Spill Containment Regulations.



U.S. Patent No. 5,615,608

Part#	Description	Dimensions in. (mm)	Load Cap. lbs. (kg)	Containment Cap. gal. (L)	Weight lbs. (kg)
1157	IBC Spill Pallet Plus	62 x 62 x 28 (1,575 x 1,575 x 711)	8,500 (3,856)	365 (1,382)	280.0 (127.0)
1160	Ultra-Bucket Shelf	19 1/2 x 16 x 14 1/2 (495 x 406 x 368)	-	-	10.0 (5.0)

Also available with drain

Ultra-Spill Deck Bladder System®

Hidden containment bladder automatically unfurls to capture large spills or drum leaks

- + Compact footprint saves valuable floor space — perfect for drum waste collection usage.
- + Use the Spill Deck Bladder Systems in place of taller containment pallets — low 5 3/4" deck height offers significant safety and handling benefits.
- + Meets SPCC and EPA Container Storage Regulation 40 CFR 264.175 Spill Containment Regulations.



U.S. Patent No. 5,642,834 · Canadian Patent No. 2,030,984

Part#	Description	Dimensions in. (mm)	Load Capacity lbs. (kg)	Contain. Capacity gal. (L)	Weight lbs. (kg)
1320	P1 Bladder System (1-Drum)	25 7/8 x 30 1/2 x 5 3/4 (657 x 775 x 146)	1,500 (681)	77 (291)	27.0 (12.0)
2329	P2 Bladder System (2-Drum)	52 x 30 1/2 x 5 3/4 (1,321 x 775 x 146)	3,000 (1,361)	88 (333)	44.0 (20.0)
2330	P4 Bladder System (4-Drum)	52 x 56 7/8 x 5 3/4 (1,321 x 1,438 x 146)	6,000 (2,722)	110 (416)	66.0 (30.0)
2317	Bladder Attachment (bladder and bulkhead)	25 7/8 x 4 7/8 x 5 3/4 (638 x 117 x 117)	-	66 (250)	4.0 (2.0)
6340	Replacement Bladder (for P/N 70229893)	65 1/2 x 66 Unfurled (1,664 x 1,676)	-	66 (250)	2.0 (1.0)
2345	Bladder Pump	12 x 7 x 5 1/2	-	-	3.0 (1.5)

Ultra-IBC Hard Top®

Comply with regulations while storing IBC tanks outdoors

- + Upper roll-top door and lower swingout doors combine to allow easy and convenient access to IBC.
- + Low profile (28" height), 360-gallon containment sump allows safe material handling and dispensing.
- + Forkliftable and lockable.
- + Helps meet Stormwater Management Regulations — NPDES, 40 CFR 122.26 (1999).
- + Meets SPCC and EPA Container Storage Regulation 40 CFR 264.175 Spill Containment Regulations.



U.S. Patent No. 5,615,608

Part#	Description	Dimensions in. (mm)	Load Cap. lbs. (kg)	Containment Cap. gal. (L)	Weight lbs. (kg)
1162	Ultra-IBC Hard Top	64 1/2 x 62 x 96 (1,639 x 1,575 x 2,439)	8,500 (3,856)	365 (1,382)	525.0 (239.0)
1148	Twin IBC Hard Top	128 x 67 x 96 (3,251 x 1,702 x 2,438)	8,000 (3,629)	535 (2,025)	1,067.0 (484.0)
1160	Ultra-Bucket Shelf	19 1/2 x 16 x 14 1/2 (495 x 406 x 368)	-	-	10.0 (5.0)

Also available with drain

Ultra-Containment Sumps®

Rigid secondary containment for fuel tanks

- + Economical containment for 275, 500/550, and 1000-gallon fuel and oil tanks.
- + 100% polyethylene construction will not rust or corrode; provides superior chemical and weather resistance.
- + Meets SPCC and EPA Container Storage Regulation 40 CFR 264.175 Spill Containment Regulations.



2823



2800



2830

Part#	Description	Outside Dimensions in. (mm)	Containment Capacity gal. (L)	Weight lbs. (kg)
2800	275 Sump	84½ x 43¾ x 29 (2,147 x 1,112 x 737)	360 (1,363)	90.0 (41.0)
2823	550 Sump	87 x 62¼ x 32¾ (2,210 x 1,582 x 832)	605 (2,291)	108.0 (41.0)
2830	1000 Sump	148 x 63 x 33 (3,759 x 1,600 x 838)	1,100 (4,164)	244.0 (111.0)

Also available with drain

Ultra-Utility Trays®

Keep messy drips and spills off warehouse and factory floors

- + Heavy-duty polyethylene construction — will not rust or corrode.
- + Ribbed bottom keeps cans, pails and other containers elevated above small spills or leaks.
- + Nestable for easy storage when not in use.



Part#	Dimensions in. (mm)	Containment Capacity gal. (L)	Weight lbs. (kg)
1031	12 x 48 x 4¾ (305 x 1,219 x 121)	12 (45)	7.0 (3.5)
1032	24 x 48 x 4¾ (610 x 1,219 x 121)	24 (91)	11.0 (5.0)
1033	30 x 48 x 4¾ (762 x 1,219 x 121)	30 (113)	12.0 (5.5)
1034	24 x 36 x 4¾ (610 x 914 x 121)	18 (68)	8.0 (3.5)
1035	36 x 36 x 4¾ (914 x 914 x 121)	27 (102)	11.0 (5.0)

Flexible model also available

Ultra-Pop Up Pools®

Pop up pools instantly expand to capture leaks from saddle tanks, pipes, hydraulic lines, and many other industrial incidents

- + Unique, patented design — foam ring rises with level of liquid to raise sidewalls.
- + Excellent chemical resistance, including diesel fuel, antifreeze, acids, caustics, and corrosives.
- + Helps minimize environmental damage and related clean-up costs.



8150 or 8153

U.S. Patent No. 5,429,437

Part#	Description	Dimensions (Filled) in. (mm)
8022	Economy Model 20 gal (76 L)	Wall Height 8, Top dia. 28, Bottom dia. 35 (204, 711, 889)
8068	Economy Model 66 gal (250 L)	Wall Height 12, Top dia. 42, Bottom dia. 53 (305, 1067, 1347)
8102	Economy Model 100 gal (379 L)	Wall Height 12, Top dia. 53, Bottom dia. 64¾ (305, 1347, 1638)
8153	Economy Model 150 gal (568 L)	Wall Height 12, Top dia. 64, Bottom dia. 76 (305, 1626, 1930)
8160	Economy Model 250 gal (946 L)	Wall Height 12, Top dia. 73, Bottom dia. 85 (305, 1855, 2159)

Ultra-Drip Diverters®

Catch roof leaks and divert them away from equipment, inventory, and personnel

- + Large, vinyl-coated fabric catches roof leaks and channels them to standard hose hook-up. (Hoses available — Part# 1782 and 1792, see below.)
- + Hose can then be directed to proper drainage point.
- + Bottom fitting of Pipe Drip Diverter connects to a standard garden hose (optional), allows fluids to be collected in a drum or tank.
- + Rugged, coated vinyl construction — ships complete with bungee cords and hooks for quick installation.



1785



1780

Part#	Description	Dimensions ft. (mm)	Weight lbs. (kg)
1785	Roof Drip Diverter	5 x 5 (1,524 x 1,524)	2.0 (1.0)
1786	Roof Drip Diverter	7 x 7 (2,134 x 2,134)	4.0 (2.0)
1787	Roof Drip Diverter	10 x 10 (3,048 x 3,048)	8.0 (3.5)
1788	Roof Drip Diverter	12 x 12 (3,658 x 3,658)	15.0 (7.0)
1789	Roof Drip Diverter	15 x 15 (4,572 x 4,572)	22.0 (10.0)
1790	Roof Drip Diverter	20 x 20 (6,096 x 6,096)	36.0 (16.0)
1780	Pipe Drip Diverter	18 dia. x 18 (46 x 46)	2.0 (1.0)

Ultra-Containment Berm® Ultimate Models

Unique, “living hinge” design allows hands-free drive In/drive out — no need to manually raise or lower the endwalls

- + Once a vehicle has entered or exited, the walls automatically spring back to their vertical position.
- + Standard material of construction is Copolymer 2000™ (28 oz.). Other rugged, chemical resistant materials available.
- + Meets SPCC and EPA Container Storage Regulation 40 CFR 264.175 Spill Containment Regulations.



8506

U.S. Patent No. 5,924,461

Part#	Dimensions ft. (m)	Containment Capacity gal. (L)	Weight lbs. (kg)
8505	12 x 60 x 1 (3.7 x 18.3 x 0.3)	5,385 (20,382)	309.0 (140)
8506	15 x 50 x 1 (4.6 x 15.2 x 0.3)	5,610 (21,234)	326.0 (148)
8507	15 x 66 x 1 (4.6 x 20.1 x 0.3)	7,405 (28,028)	405.0 (184)

Additional sizes available at spillcontainment.com/containmentberms

Ultra-Containment Berm® Foam Wall Models

Low profile design is perfect for equipment maintenance and portable drum containment

- + Capture nuisance leaks and spills from vehicles, oily equipment, tanks and drums.
- + No set-up required - simply unfold for quick deployment. Folded units require minimal storage space.
- + Meets SPCC and EPA Container Storage Regulation 40 CFR 264.175 Spill Containment Regulations.
- + Custom sizes and sidewall height available.



8464

Copolymer 2000™ Part#	PVC 22 oz. Part#	Dimensions ft. (m) Wall Height: 4 in. (102 mm)	Containment Capacity gal. (L)	Copolymer 2000™ Weight lbs. (kg)	PVC 22 oz. Weight lbs. (kg)
8570	8460	4 x 6 (1.2 x 1.8)	59 (223)	27.0 (12.0)	21.0 (9.5)
8571	8461	8 x 8 (2.4 x 2.4)	159 (602)	45.0 (20.0)	40.0 (18.0)
8573	8471	10 x 20 (3.0 x 6.1)	498 (1,885)	101.0 (46.0)	83.0 (38.0)
8578	8462	12 x 16 (3.7 x 4.9)	478 (1,809)	97.0 (44.0)	74.0 (33.5)
8581	8463	12 x 35 (3.7 x 10.7)	1,047 (3,963)	184.0 (84.0)	138.0 (62.5)
8583	8464	12 x 50 (3.7 x 15.2)	1,496 (5,663)	249.0 (113.0)	187.0 (85.0)

8670 - All-In-One option (Includes pre-attached Ground Tarp and Track Belts) See website

Options: Ground Tarps, Track Belts, Pullover Covers, Self Bailer (pg. 6), Hose Stand

Additional sizes available at spillcontainment.com/containmentberms

Ultra-Containment Berm® Collapsible Models

Economical design sets up quickly — provides secure containment

- + The Collapsible Wall Model Containment Berm features rugged PVC sidewall assemblies for sidewall support. Simply swivel the “feet” of the PVC supports to lower or raise the sidewalls in just seconds!
- + Standard material of construction is Copolymer 2000™ (28 oz.). Other rugged, chemical resistant materials available.
- + Meets SPCC and EPA Container Storage Regulation 40 CFR 264.175 Spill Containment Regulations.



8556

Part#	Dimensions ft. (m)	Containment Capacity gal. (L)	Weight lbs. (kg)
8405	4 x 6 x 1 (1.2 x 1.8 x 0.3)	179 (678)	43.0 (19.5)
8403	6 x 6 x 1 (1.8 x 1.8 x 0.3)	269 (1,018)	46.0 (21.0)
8400	10 x 10 x 1 (3 x 3 x 0.3)	748 (2,831)	70.0 (32.0)
8556	12 x 30 x 1 (3.7 x 9.1 x 0.3)	2,692 (10,190)	142.0 (64.0)

Additional sizes available at spillcontainment.com/containmentberms

Ultra-Containment Berm® Rapid-Rise Models

Sidewalls stay lowered and out of the way until they are needed

- + Sidewalls remain down during normal operations, loading and unloading — minimizing trip hazards.
- + In the case of a spill, the foam ring around the top perimeter of the Containment Berm rises with the level of spilled liquid.
- + Meets SPCC and EPA Container Storage Regulation 40 CFR 264.175 Spill Containment Regulations.
- + Custom sizes available.



8437

Copolymer 2000™ Part#	PVC 22 oz. Part#	Dimensions ft. (m) Wall Height: 12 in. (305 mm)	Containment Capacity gal. (L)	Copolymer 2000™ Weight lbs. (kg)	PVC 22 oz. Weight lbs. (kg)
8430	8654	4 x 6 (1.2 x 1.8)	179 (678)	31.0 (14.0)	24.0 (11.0)
8431	8630	6 x 6 (1.8 x 1.8)	269 (1,018)	37.0 (17.0)	30.0 (14.0)
8432	8631	10 x 10 (3.0 x 3.0)	748 (2,831)	69.0 (31.0)	54.0 (24.5)
8437	8656	12 x 26 (3.7 x 7.9)	2,333 (8,831)	151.0 (68.5)	118.0 (54.0)
8433	8664	15 x 50 (4.6 x 15.2)	5,610 (21,234)	302.0 (137.0)	244.0 (111.0)
8434	8666	15 x 66 (4.6 x 20.1)	7,405 (28,028)	388.0 (175.0)	313.0 (142.0)

8670 - All-In-One option (Includes pre-attached Ground Tarp and Track Belts) See website

Options: Ground Tarps, Track Belts, Pullover Covers, Self Bailer (pg. 6), Hose Stand

Additional sizes available at spillcontainment.com/containmentberms

Ultra-Containment Berm® Stake Wall Models

Portable secondary containment for drums, tanks, equipment, and vehicles

- + No set-up required — unfold and the sidewalls automatically spring into their vertical position.
- + Sidewalls collapse in either direction and spring back automatically to their upright position.
- + Standard material of construction is Copolymer 2000™ (28 oz.). Other rugged, chemical resistant materials available.
- + Meets SPCC and EPA Container Storage Regulation 40 CFR 264.175 Spill Containment Regulations.



8208

U.S. Patent No. 5,924,461

Part#	Dimensions ft. (m)	Containment Capacity gal. (L)	Weight lbs. (kg)
8208	4 x 6 x 1 (1.2 x 1.8 x 0.3)	179 (678)	38.0 (17.0)
8209	6 x 6 x 1 (1.8 x 1.8 x 0.3)	269 (1,018)	49.0 (21.0)
8210	10 x 10 x 1 (3 x 3 x 0.3)	748 (2,831)	92.0 (42.0)
8211	15 x 50 x 1 (4.6 x 15.2 x 0.3)	5,610 (21,234)	383.0 (174.0)
8212	15 x 66 x 1 (4.6 x 20.1 x 0.3)	7,405 (28,028)	490.0 (222.0)

Additional sizes available at spillcontainment.com/containmentberms

Ultra-Bung Access Funnel®

The Ultra-Bung Access Funnel allows access to the 3/4" drum bung. Installation of our Pop-Up Fill Gauge in the 3/4" bung allows visual monitoring of waste level in the drum and helps you plan ahead for drum removal. It also eliminates the mess caused by overfilling!



0484

0482



Ultra-Burp-Free Funnel®

The Burp-Free Funnels feature a built-in vent. So there is no more splashing or "burping" when pouring liquids. The threaded brass insert screws into 2" drum bung or tank cap. The hinged, lockable lid prevents unauthorized access.



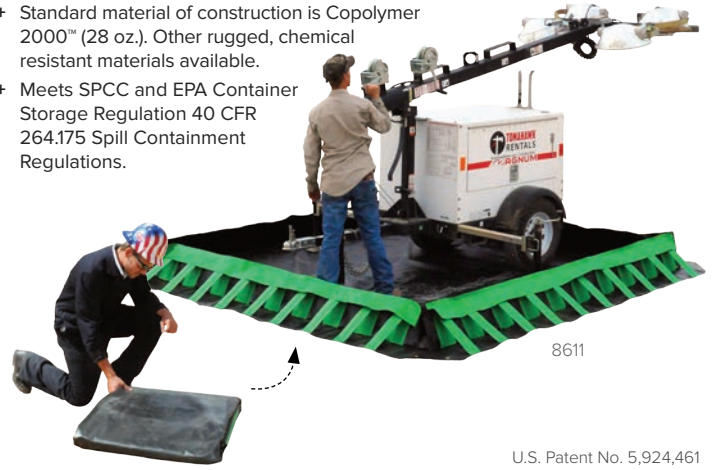
0656

Part#	Description	Dimensions in. (mm)	Cap. gal. (L)	Weight lbs. (kg)
0482	Bung Access Funnel	23% dia. x 5½ (600 x 241)	6 (23)	9.0 (4.0)
0484	Bung Access Funnel With Hinged Cover	29 x 26¾ x 9½ (737 x 679 x 241)	6 (23)	13.0 (6.0)
0651	Burp-Free Funnel (Standard)	13% dia. x 11 (340 x 279)	—	2.0 (1.0)
0656	Burp-Free Funnel (Large)	22 dia. x 11½ (559 x 292)	—	6.0 (3.0)

Ultra-Containment Berm® Compact Models

Compact design folds into a tight package – minimal space required to store onboard trucks and hazmat response vehicles

- + Compact, lightweight, portable design — no inflation required.
- + Sidewalls lower quickly to allow drive in/drive out.
- + Standard material of construction is Copolymer 2000™ (28 oz.). Other rugged, chemical resistant materials available.
- + Meets SPCC and EPA Container Storage Regulation 40 CFR 264.175 Spill Containment Regulations.



8611

U.S. Patent No. 5,924,461

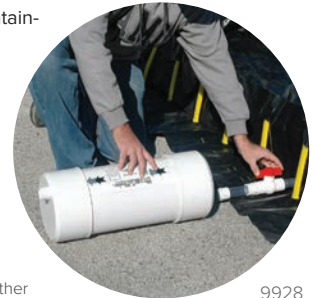
Part#	Dimensions ft. (m)	Containment Capacity gal. (L)	Weight lbs. (kg)
8609	10 x 10 x 1 (3 x 3 x 0.3)	748 (2,831)	72.0 (32.5)
8610	15 x 50 x 1 (4.6 x 15.2 x 0.3)	5,610 (21,234)	317.0 (144.0)
8611	10 x 10 x 1 (3 x 3 x 0.3)	748 (2,831)	72.0 (32.5)
8612	12 x 60 x 1 (3.7 x 18.3 x 0.3)	5,385 (20,384)	391.0 (177.0)
8613	15 x 50 x 1 (4.6 x 15.2 x 0.3)	5,610 (21,234)	317.0 (144.0)
8614	15 x 66 x 1 (4.6 x 20.1 x 0.3)	7,405 (28,028)	472.0 (214.0)

Additional sizes available at spillcontainment.com/containmentberms

Ultra-Self Bailers®

Passively filter hydrocarbons from stormwater in outdoor containment products

- + The best protection for non-monitored containment sites.
- + Helps eliminate problems associated with the collection of rainwater in outdoor containment products.
- + Larger or concentrated spills activate "auto-shutoff" mechanism.
- + Manual shutoff valve can be used to secure all draining operations, change out the filter cartridge.



9928

Use with IBC Spill Pallets, Containment Sumps, and other outdoor containment products. (Part # 9928 shown)

Produced under exclusive license of Blue Ribbon Environmental Products, Inc. (U.S. Patent Pending.)

Part#	Size	Dimensions in. (mm)	Material	Flow Rate gal. (L) per hour	Weight lbs. (kg)	Replacement Filter Part#
9935	Standard	28 L x 3½ dia. (712 x 89)	PVC	7.5 (29)	2.0 (1.0)	9936 (Qty. 2)
9937	Large	36 L x 4½ dia. (915 x 115)	PVC	22 (84)	6.0 (3.0)	9938 (Qty. 1)
9926	XL	39 L x 6½ dia. (991 x 166)	PVC	42 (159)	11.0 (5.0)	9927 (Qty. 1)
9928	XXL	43 L x 9 dia. (1,093 x 229)	PVC	55 (209)	16.0 (7.0)	9929 (Qty. 1)

* At 2" WC (Head Pressure)

Ultra-Track Pans®

Capture hazardous spills from railroad tanker cars and locomotives

- + Prevent costly cleanup and regulatory fines.
- + Slip-resistant design.
- + All polyethylene construction — Rugged Track Pans withstand harsh chemicals and are designed to function in temperatures ranging from -40° F to +140° F.
- + Sealed System — Polyethylene gaskets keep spills from falling between the rails and Pans.
- + Trucks and other vehicles can drive over Track Pans with grates in place.
- + Economical and easy to install.



Track Pans with Grates, No Covers



Track Pans with Grates and Covers



Large, 3"-diameter flow-through channels allow spills to quickly travel from one Pan to the next. Channels are located at the low point in each Center and Side Track Pan.



All Center and Side Track Pans are molded with pipe fitting locators at their lowest point. Below-grade piping can be installed to channel large spills to oil/water separators, holding ponds, etc.

Part#	Description	Components Included	Weight lbs. (kg)
9595	9' Ultra-Track Pans Complete Systems without Covers	Two Center Pans, Four Side Pans, No Covers	610.0 (277.0)
9596	9' Ultra-Track Pans Complete Systems with Covers	Two Center Pans, Four Side Pans, With Covers	790.0 (358.0)
9589	40' Ultra-Track Pans System without Covers	Nine Center Pans, Eighteen Side Pans, No Covers	2,385.0 (1,082.0)
9590	40' Ultra-Track Pans System with Covers	Nine Center Pans, Eighteen Side Pans, With Covers	2,925.0 (1,327.0)
9592	60' Ultra-Track Pans Complete System without Covers	Fourteen Center Pans, Twenty-eight Side Pans, No Covers	3,178.0 (1,442.0)
9593	60' Ultra-Track Pans Complete System with Covers	Fourteen Center Pans, Twenty-eight Side Pans, With Covers	3,822.0 (1,733)

Visit trackpans.com for more detailed information.

Ultra-Overpacks®

Screw top Ultra-Overpacks offer the highest UN and DOT certifications available

- + 95 and 65 gallon Plus models comply with UN Packaging Group 1 (X-Rating) and are certified for use as DOT Salvage Drums, 49 CFR 173.3 (c). Visit SpillContainment.com for more regulatory information.
- + Excellent chemical resistance, including acids, caustics, and corrosives.
- + Convenient, "no-tools required" closures are perfect for clean-up and spill response activities.
- + Nestable design and low tare weight allow convenient storage and reduced transportation costs.



Part#	Model	Capacity gal. (L)	Top Outside Dia. in. (mm)	Outside Height in. (mm)	Weight lbs. (kg)
0580	95 Gallon	95 (360)	32¼ (820)	41¼ (1,049)	48.0 (22.0)
0584	95 Wheeled	95 (360)	32¼ (820)	48½ (1,232)	58.0 (26.0)
0570	95 Recycled	95 (360)	32¼ (820)	41¼ (1,049)	48.0 (22.0)
0582	65 Gallon	65 (247)	29 (737)	36¼ (921)	40.0 (18.0)
0585	30 Gallon	30 (113.5)	22¾ (581)	30¾ (765)	15.0 (7.0)
0587	20 Gallon	20 (76)	21¾ (552)	19¼ (489)	12.0 (5.5)

Ultra-Spill Berms®

Temporary berm seals off spills from the environment, nearby drains, and doorways

- + Unique, urethane material "weeps" into small cracks and crevices to seal off liquid flow.
- + Spill Berm is non-absorbing and is easily cleaned for repeated use.
- + Helps comply with NPDES and SPCC.



Plus Model



Standard Model

U.S. Patent No. 5,236,281

Part#	Model	Color	Dimensions	Weight lbs. (kg)
2100	Standard	Orange	10' x 4" x 2¼" (3,048 mm x 102 mm x 58 mm)	31.0 (14.0)
2054	Plus	Orange	5' x 4" x 4½" (1,524 mm x 102 mm x 114 mm)	16.0 (7.0)
2050	Standard	Black	10' x 4" x 2¼" (3,048 mm x 102 mm x 58 mm)	31.0 (14.0)

Ultra-Drain Seals®

Stop spills from going down the drain

- + Reinforcing mesh is "sandwiched" between layers of polyurethane — increases durability and resistance to tearing.
- + Unique, urethane construction allows the pad to deform and seal off most drains — temporarily "seals" to any smooth surface.
- + A valuable addition to any emergency response plan, spill kit, SPCC, or stormwater management program.
- + Unlike some alternative products, BOTH sides will quickly seal drains — there is no specified "top" or "bottom."



2130

U.S. Patent No. 6,530,722

Part#	Shape	Dimensions in. (mm)	Weight lbs. (kg)
2127	Square	24 x 24 x 3/8 (610 x 610 x 10)	8.0 (3.5)
2130	Square	36 x 36 x 3/8 (915 x 915 x 10)	20.0 (9.0)
2131	Square	42 x 42 x 3/8 (1,067 x 1,067 x 10)	23.0 (10.5)
2132	Square	48 x 48 x 3/8 (1,220 x 1,220 x 10)	36.0 (17.0)
2133	Square	54 x 54 x 3/8 (1,372 x 1,372 x 10)	41.0 (18.5)
2134	Circular	12 dia. x 3/8 (305 x 10)	3.0 (1.5)
2136	Circular	30 dia. x 3/8 (762 x 10)	11.0 (5.0)
2160	Square (Plus Model)	36 x 36 (915 x 915)	23.0 (10.5)

More sizes and Clear Models available.
Wall Mounts available.

Ultra-Dewatering Bags®

Contain sediment and oil pumped out during dewatering operations

- + Retains both oil and sediment, offering a combination of benefits not available in alternative dewatering bags.
- + Accommodates up to 4" discharge hose.
- + Helps comply with NPDES, 40 CFR 122.26 (1999) when used as Best Management Practice in Stormwater Pollution Prevention Plans.



9724-O/S

Part#	Capacity cu. ft. (L)	Dimensions ft. (mm)	Weight lbs. (kg)
9724-O/S	18 (510)	6 x 6 (1,829 x 1,829)	5.0 (2.5)
9725-O/S	150 (4,247)	10 x 15 (3,048 x 4,572)	21.0 (9.5)
9727-O/S	225 (6,371)	15 x 15 (4,572 x 4,572)	30.0 (14.0)

Ultra-Drain Guards®

Keep sediment and other pollutants from entering the water system with Ultra-Drain Guard catch basin inserts

- + The Ultra-Drain Guard is engineered to filter stormwater waste before it becomes a problem in the water system. As a storm drain filter, it removes contaminants like litter, sand, and oil from stormwater flow. Its geotextile fabric and easy installation makes it ideal for industrial facilities, construction sites, and parking lots where stormwater runoff is likely to carry oil, eroded soil, debris, and fuel contaminants.
- + Helps comply with NPDES, 40 CFR 122.26 (1999) and TMDL requirements - All Models.



9217

Ultra-Drain Guards® Oil & Sediment Plus



Ultra-Drain Guards® Oil & Sediment Model



U.S. Patent No. 5,372,714; 5,575,925; 6,632,501; 8,715,491

Part#	Description	Dimensions in. (mm)	Performance	Weight lbs. (kg)
9217	Oil & Sediment (1-Pack)	48 x 36 x 18 (1,220 x 915 x 458)	Up to .87 gals. (3.5 L) of oil and up to 40 lbs. (18 kg) of sediment	1.0 (0.5)
9218	Oil & Sediment (10-Pack)	48 x 36 x 18 (1,220 x 915 x 458)	Up to .87 gals. (3.5 L) of oil and up to 40 lbs. (18 kg) of sediment	1.0 (0.5)
9219	Oil & Sediment Plus Model (1-Pack)	48 x 36 x 18 (1,220 x 915 x 458)	Up to 1.38 gallons (5L) of oil and up to 40 lbs. (18 kg) of sediment	2.0 (1.0)
9220	Oil & Sediment Plus Model (10-Pack)	48 x 36 x 18 (1,220 x 915 x 458)	Up to 1.38 gallons (5L) of oil and up to 40 lbs. (18 kg) of sediment	2.0 (1.0)

Ultra-Pipe Socks®

Control the flow of sediment and oil out of headwall and other types of pipes

- + Also use in pond applications where vertical pipes extend above the water surface, and preventing sediment in-flow during high-water events is required.
- + Several standard and custom sizes available.
- + Helps comply with NPDES, 40 CFR 122.26 (1999).



9705-O/S

U.S. Patent No. 6,632,501

Part#	Description	Dimensions in. (mm)	Weight lbs. (kg)
9705-O/S	Oil & Sediment	8 dia. x 60 L (204 x 1,524)	3.0 (1.5)
9706-O/S	Oil & Sediment	12 dia. x 60 L (305 x 1,524)	3.0 (1.5)
9707-O/S	Oil & Sediment	16 dia. x 60 L (407 x 1,524)	3.0 (1.5)

www.ASA-environmental.com · 1-800-783-5272 · info@ASA-environmental.com

